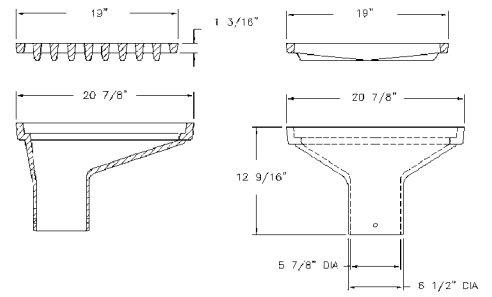


5840 ELEVATED & BRIDGE DRAIN INLET

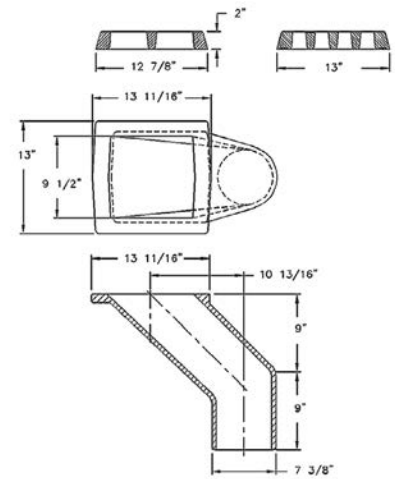
Heavy duty
 Approximate 154 sq. in. open area



5844 ELEVATED & BRIDGE DRAIN INLET

Heavy duty
 Bridge drain with 5826 grate
 Approximate 48 sq. in. open area

Options
 Available with 6 — 1/2" x 13" tapped holes
 furnished 2" up from bottom



5845 ELEVATED & BRIDGE DRAIN INLET

Heavy duty
 Approximate 306 sq. in. open area
 Bolted assembly

